

FIRST AID AND SKINCARE



Industrial **Protective** Products (WA)
Supporting Better Products



First Aid & Skincare - First Aid - Diphoterine

DIPHOTERINE®

Diphoterine® is a washing solution designed for ocular and cutaneous chemical splashes. Set up at the work station and used as first-aid, it allows the minimization or avoidance of the development of chemical burns, stopping both the effect and the penetration of the irritant and/or corrosive by way of its amphoteric, chelating and hypertonic properties. Diphoterine®, dispensed in specially designed containers, permits and facilitates effective decontamination, reduces pain, the need for secondary care, sequelae and lost work time.

A clinical study carried out in a hospital setting has shown the advantages of even delayed washing with Diphoterine® for the management of ocular chemical burns, combined with a therapeutic protocol aimed at reducing inflammation and at preventing infection while encouraging healing. A published grade IV case likewise developed progressive epithelialization in less than 21 days and complete and stable healing without surgery after 180 days

There are no known negative interactions with the different families of medicines or devices and more specifically with ophthalmic solutions used in chemical burn protocols.

Diphoterine® is currently being tested for the treatment of chemical digestive burns but has not yet been validated. However, it has already been tested and classed as non-toxic if swallowed.

The DIPHOTERINE® solution

In response to the mechanism of chemical burns, an efficient decontamination requires:

- to remove the chemical from the surface to prevent further penetration
- to stop polyvalently the six kinds of aggressive chemical reactions
- to be able to stop the penetration of the aggressive product into the tissues.

1- Like the usual rinsing solutions, The DIPHOTERINE® solution is a liquid and therefore meets the need of rinsing the surface.

2- The DIPHOTERINE® solution contains a chelating and amphoteric molecule with at least one site able to stop the six kinds of possible reactions (acid, base, oxidation, reduction, solvation, chelation).

Polyvalence is a crucial advantage of the DIPHOTERINE® solution.

3- The DIPHOTERINE® solution is hypertonic which allows to attract towards the outside the chemical that has yet penetrated into the tissues.

The combination of these three properties allows the DIPHOTERINE® solution to prevent any possible sequelae resulting from this kind of accident because it decontaminates the chemical splash completely, inside and outside the tissues, in a polyvalent way.

The DIPHOTERINE® solution is guaranteed to be phosphate-free.

The DIPHOTERINE® solution is recommended for skin/eye decontamination of nearly all chemical substances, such as acids, bases, oxidizers, reducing agents, and solvents.

First Aid & Skincare - First Aid - Diphoterine



Aims and Issues of Chemical Decontamination

PREVOR laboratory is a specialist in the field of Chemical Risk.

It has a double mission:

to help companies decrease the frequency of accidents,

to develop products which are able to minimize the consequences of chemical projections in the event of an accident.

It is on the basis of this double objective that research has been undertaken to understand the mechanism of chemical burns, to improve on existing rinsing solutions (water, saline solution) and to propose medical devices to be used in case of emergency, irrespective of the surface and size of the affected area, and of the nature and the concentration of the chemical involved.

There are more than 25,000 chemicals likely to cause cutaneous or ocular lesions and burns (after a single or repeated contact), such as acids, bases, oxidizers, reducing agents, and solvents.

The Benefits and the Limitations of Rinsing with Water

After receiving a chemical splash, the victim must be undressed and the affected tissues must be rinsed as quickly as possible. Rinsing with water was the first protocol used for chemical decontamination and this dogma persists on the basis of arguments which are more practical than scientific, because of its general-purpose and non-toxic character, and of its availability. It allows the chemical agent at the surface of the affected tissues to be carried away by a mechanical effect, independent of its nature and concentration.

However, there are limits to water rinsings:

it does not act on the potentially irritating or corrosive nature of the chemical agent,
there is no rapid return to a physiological state (the effect of carrying the chemical agent away is limited to the surface tissue and has no in-depth effect),

water favors the chemical agent's penetration of the tissue

in order to obtain optimal results, it is necessary to intervene very quickly (10 seconds according to the ANSI standard) after the splash. However, there is sometimes only partial effectiveness, in particular on major corrosive agents.

Observations of significant after-effects, secondary care and surgical interventions resulting in permanent disability, and even fatalities are regularly reported in the scientific literature.

Recently, comparative studies have shown the possibility of improving on rinsing with water.



Industrial Protective Products (WA)
Supporting Better Products



First Aid & Skincare - First Aid - Diphoterine

Increasing the Chances of Being Saved

Improving on rinsing with water consists of finding other solutions without these limitations in order to increase the chances of the victim both being saved and experiencing a minimum of after-effects.

In order to accomplish this, the DIPHOTERINE® solution, an aqueous solution that contains an amphoteric and chelating molecule was introduced. The aim of the resulting solution is to prevent chemical burns or to lessen their seriousness.

The improvements brought by the DIPHOTERINE® solution to chemical decontamination are as follows:

- it stops the irritating and corrosive agents actions on the eye and skin, thanks to its amphoteric and chelating properties,
- it stops the chemical agent penetration of the tissues and carries the chemical away from the interior to the exterior of the tissue, thanks to its hypertonicity,
- it allows a rapid return to a pH level between 5.5 et 9, without any danger of a burn,
- it has a prolonged intervention time compared to water (in the minute following the chemical splash) with improved rinsing effectiveness: absence of after-effects, no or little need for secondary care, and no or little loss of work.

The DIPHOTERINE® solution has been classified as a medical device according to the 93/42 CEE. Directive. It claims to act on the chemical agent in order to stop or to minimize the development of chemical burns. It is classified IIa because it can be used on injured skin.(Dr Cavallini) (link with the publications: Cavallini, Annals of Burns and Fire disasters 2004, vol XVII-2, 84-87 and Cavallini, European Journal of Anaesthesiology 2004, 21, 389-392).

Since the DIPHOTERINE® solution does not act on the human organism and its action on the chemical agent is not obtained neither by pharmaceutical, immunological or by metabolism means, it has not been classified as a drug.

What is important to remember

First-aid rinsing with water was the first decisive improvement in the decontamination of chemical splash-es; But water rinsing has limits that have been improved on with the DIPHOTERINE® solution.

The DIPHOTERINE® solution can be used according to two protocols:

Either as a first-aid treatment in emergency situations, in the workplace, (at the scene of the accident), in order to avoid any after-effects when used in the first minute after the splash has occurred,
Or with a delayed usage, in the case of treatment before or after hospitalization, where the DIPHOTERINE® solution stops the development of chemical burns and allows a rapid return to a physiological state. It is a treatment adapted to the seriousness of the burn which can then be applied in optimal conditions.

If the chemical is corrosive, or if there is a risk that the splash will not be handled in the first seconds, the water protocol represents a missed opportunity when compared to the DIPHOTERINE® solution protocol.

First Aid & Skincare - First Aid - Diphoterine



(*)Additional Information

The DIPHOTERINE® solution is an active molecule which permits the rapid and effective rinsing of chemical agents.

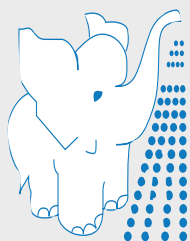
Its effectiveness has been proved on more than 600 chemical agents representing the majority of major chemical groups.

The DIPHOTERINE® solution, thanks to its amphoteric characteristics can never be dangerous.

The DIPHOTERINE® solution, even if it has no chemical activity on a compound, is always more effective when compared to an isotonic solution, and even more when compared to water.

If there is any doubt regarding new chemicals, the effectiveness of the DIPHOTERINE® solution must always be evaluated.

We remain at your disposition to perform this evaluation.



PREVOR

ANTICIPATE AND SAVE

Toxicology Laboratory & Chemical Risk Management



Industrial Protective Products (WA)
Supporting Better Products



First Aid & Skincare - First Aid - Diphoterine

Protocol for Diphoterine® use

In cases of corrosive or irritant chemical splashes on skin or eyes*.

ACTION WITHIN THE FIRST MINUTE



Action within
the first 10 seconds



Use
1 SIEW
50 ml

Action between
10s and 60s



Use
1 LPM
500 ml



3% of body
surface



Use
1 MICRO DAP
100 ml



9% of body
surface



Use
1 MINI DAP
200 ml



> 9% of body
surface



Use
1 DAP
5 litres



WASHING PROTOCOL WITH DIPHOTERINE®*

Start washing **within the first minute** following the splash, beginning with **uncovered areas**.

Remove clothing and/or contact lenses.

Continue washing the **unclothed areas** as quickly as possible.

Do not put back on clothes stained with washing residue or chemicals.

Consult a specialist.

GENERAL INSTRUCTIONS

Never delay washing.

For optimal effectiveness, use Diphoterine® **as the primary action**.

Use the entire contents of the container.

If there is no Diphoterine® available, use water and then wash with Diphoterine® as soon as possible.

For a contact time **greater than 1 minute**, prolong the washing of the contaminated area with Diphoterine® for 3 to 5 times the duration of the contact time.

In case of a delayed ocular splash, it is not necessary to continue washing for more than 15 minutes.

Then immediately seek medical advice.

After an active washing of the eye, the use of **Afterwash II®** is recommended to facilitate a more rapid return of the eye to a physiological state.

If **oral mucosa** is affected by the splash, rinse the mouth with Diphoterine® and then spit it out.

If **the ear canal is affected**, wash as rapidly as possible with Diphoterine® by instilling 500ml inside the canal, leaning the head to one side, in order to allow the liquid to flow out of the ear.

As in any case of unilateral rinsing of one ear with a liquid at room temperature, a dizzy feeling, without any serious consequences, can occur. It will spontaneously disappear after a few minutes.

Container	Average diffusion time
SIEW (50ml)	30 seconds
Micro DAP (100ml)	50 seconds
Mini DAP (200ml)	1 minute 30 seconds
LPM (500ml)	3 minutes
DAP (5l)	5 minutes



Industrial Protective Products (WA)
Supporting Better Products



First Aid & Skincare - First Aid - Diphoterine

Diphoterine® How it Works!

Diphoterine® is a multi-purpose first aid active solution it is suitable for all kinds of chemical contamination, acids, bases, chelating agents, oxidizing agents, reducing agents and solvents except for hydrofluoric acid and its derivatives. In this instance Hexafluorine® should be used.

Diphoterine® is an aqueous non-toxic solution, which contains an absorbent that connects immediately to the chemical aggressor and draws it away from the skin or eye. Whether it is an irritant or corrosive Diphoterine® attracts, neutralises and absorbs the chemical aggressor. This is something water cannot do as it is a hypotonic passive solution, which can make it easier for the chemical to penetrate the skin.

The product has been approved by the Therapeutic Goods Administration for use in Australia and comes in a variety of Packages, designed for various applications. Diphoterine® is neither toxic, nor irritant, nor corrosive.

SKIN PACKAGES



Diphoterine® Micro - DAP 100ML

SC DP 18/H050 Micro 100ml

MICRO DAP

Advantages Light and small dimensions. Easy and ready to use.

Permits a quick action. A soft and micronised spray that wets a lot to permit a rinsing without trauma and a perfect distribution of the solution.

Sterile solution. Easy control of the rinsing efficiency : complete and sole use.

Does not require a specific installation and maintenance. In conformity with EN 15454-2. EC certification.

Characteristics

Sizes Height : 118 mm

Diameter : 40 mm

Capacity 100 ml

Weight 200g

Propellant Nitrogen

Shelf-life 2 years

Content DIPHOTERINE® solution

Use Hand, cheek, Face

Delay to interfere 1 minute maximum



Diphoterine® Mini - DAP 200ML

SC DP 18/H051 Mini 200ml

MINI DAP

Advantages

Light and small dimensions. Easy and ready to use. Permits a quick action.

A soft and micronised spray that wets a lot to permit a rinsing without trauma and a perfect distribution of the solution.

Sterile solution. Easy control of the rinsing efficiency : complete and sole use.

Does not require a specific installation and maintenance.

In conformity with EN 15454-2. EC certification.

Characteristics

Sizes: Height : 220 mm

Diameter: 50 mm

Capacity: 200 ml

Weight: 290g

Propellant: Nitrogen

Shelf-life: 2 years

Content: DIPHOTERINE® solution

Use: Hand and forearm, Limb, front or back of Torso

Intervention Time <1 minute

First Aid & Skincare -

First Aid - Diphoterine



Diphoterine® 5 litre - DAP Autonomous Portable Shower

SC DP 18/H057 - 5 Litre Autonomous Portable Shower

Autonomous Portable Shower
DAP

Advantages

Easily identifiable, the color of the DAP is green to make the difference with the fire extinguisher.

To be used like an extinguisher as a consequence does not entail a specific training.

Ready to use, permit a quick action

A soft and micronised spray that wets a lot to permit a rinsing without trauma and a perfect distribution of the solution.

The injured person can use the DAP alone.

Long flexible that permits a complete rinsing of the body.

Transportable. It permits the first aider to be protected as he will not be in contact with the splashed parts of the injured person.

The system can be used when the DAP is laying.

Easy control of the rinsing efficiency : complete and sole use.

Sterile solution.

The leading insures the integrity of the system.

Does not require a specific use and maintenance (does not require a feed, piping or floodgate system, no more problem of leak).

The DAP can always be transferred for the modulaire work shops.

Can be stocked in a protective box or in an anti freeze protective box.

Refillable with the possibility of a maintenance contract.

In conformity with EN 15454-2.

EC certification

Characteristics

Sizes: 640 * 220 * 200 mm

Capacity: 5 litres

Weight: 11Kg

Propellant: Carbon dioxide (CO2)

Shelf-life: 2 years

Content: DIPHOTERINE® solution

Use: The entire body surface

Intervention Time: <1 minute

Diphoterine® Exchange Shower

SC DP 18/H069 - Serviceable exchange replacement of inner component of 5 Litre Shower

Exchange shower

Option of getting 5 litre serviced and internal

Diphoterine solution is replaced where shower has been used and or has expired.

Instead of replacing the whole shower

Order Information



Call 08 9330 6355



Industrial Protective Products (WA)
Supporting Better Products



First Aid & Skincare

First Aid - Diphoterine

EYE PACKAGES



SIEW: Diphoterine® 50ml Sterilised Individual Eyewash

SC DP 18/H055

- Carry it around with you
- Immediately available, for maximum effectiveness (kept in a pocket or in a carry pouch)

Sterilised Individual Eyewash - SIEW

Advantages

Light and small dimensions. Easy to identify. Easy and ready to use. Permits a quick action.

The ergonomic eyecup facilitates the eye opening. Soft and autonomous rinsing without pressure.

Sterile solution. Sealed to assure the integrity of the system. Easy control of the rinsing efficiency : complete and sole use. Waterproof and compact.

Does not require a specific installation and maintenance.

In conformity with EN 15454-4. EC certification.

Characteristics

Sizes Height : 124 mm

Diameter : 64 mm

Capacity 50 ml

Weight 95g

Shelf-life 2 years

Content DIPHOTERINE® solution

Use One eye

Application: The Eye

Intervention: <10 seconds



Diphoterine® 500ml LPD

SC DP 18/H058

Description:

An autonomous, portable eyewash pouch . Ideal for use within Medical centres or Hospitals.

1 x LPD - PORTABLE EYEWASH Pouch of 500 ml with an

Ergonomically eye-shaped cup.

Each PORTABLE EYEWASH Pouch makes it possible to decontaminate 1 eye.

Use within the first minute following the accident.

Single use Products.

Use the total contents.

Shelf Life:

LPD - PORTABLE EYEWASH Pouch - 2 years from date of manufacture

Application: The Eye

Intervention: < 1 min.

Capacity: 500mL



Diphoterine® 500ml LPMD

SC DP 18/H082

PVC Bottle portable eyewash fitted with a patented ergonomic eyecup

Specially adapted for vehicles & mobile teams

Advantages

Light and small dimensions. Easy to identify. Easy and ready to use. Permits a quick action.

The ergonomic eyecup facilitates the eye opening. Soft and autonomous rinsing without pressure.

Sterile solution. Sealed to assure the integrity of the system. Easy control of the rinsing efficiency : complete and sole use. Waterproof and compact.

Does not require a specific installation and maintenance.

In conformity with EN 15454-4. EC certification.

Characteristics

Sizes Height : 224 mm

Capacity 500 ml

Weight 395g

Shelf-life 2 years

Content DIPHOTERINE® solution

Use One eye

Application: The Eye

Intervention: <1 minute

First Aid & Skincare

First Aid - Diphoterine



SKIN & EYE PACKAGES



Diphoterine® LMPE.DAS
Mural Washing Station
(2 x 500ml LMPE 1 x 200ml Mini
DAP 1 x 250ml Afterwash II®)

SC DP 18/H103

Advantages

Fixed and easily identifiable.
Easy and ready to use.
Allows quick action without assistance.
The entire face can be washed, with an LPMD eyewash for each eye and MINI DAP spray.
Gentle washing without pressure. Autonomous system.
Sterile solution.
Easy control of the washing effectiveness: Use each single packaging in its entirety.
Easy and adaptable installation.
Watertight, in accordance with industrial hygiene and cleanliness.
Without special care and without special installation (no need for electricity or evacuation, pipe or valve, no more leakage problems...).
The washing station wall is therefore easily removable for independent work spot to modular nature.

In conformity with EN 15454-4.

EC certification.

Characteristics

Sizes: Height: 420 mm Width: 330 mm.

Capacity: 2 x 500 ml (LPMD) - DIPHOTERINE® solution eyewash

1 x 250 ml (LOA) - AFTERWASHII® solution eyewash

1 x 200 ml (MINI) - DIPHOTERINE® solution spray

Shelf-life: 2 years

Content: DIPHOTERINE® solution, AFTERWASHII® solution.

Use: Up to 2 eyes and a face.

Intervention Time: <1 minute.



Hi-Viz Carry Pouches

SC DP 18/H091 Lime High Viz Carry Pouch To suit 200ml Diphoterine spray

SC DP 18/H090 Lime High Viz Carry To suit 100ml Diphoterine Spray

SC DP 18/H092 Lime High Viz Carry Pouch To suit 100ml Diphoterine Spray & 50ml SIEW

SC DP 18/093 Lime High Viz Carry Pouch To suit 50ml SIEW

SC DP 18/H095 Orange High Viz Carry Pouch To suit 100ml Diphoterine Spray

SC DP 18/H096 Orange High Viz Carry Pouch To suit 200ml Diphoterine spray

SC DP 18/097 Orange High Viz Carry Pouch To suit 50ml SIEW

SC DP 18/H098 Orange High Viz Carry Pouch To suit 100ml Diphoterine Spray & 50ml SIEW

Order Information



Call 08 9330 6355



Industrial Protective Products (WA)
Supporting Better Products



First Aid & Skincare - First Aid - Hexafluorine

HEXAFLUORINE®

Emergency Washing Solution Specific to Hydrofluoric Acid Hazards

Although not completely chemically dissociated ($pK = 3.20$), hydrofluoric acid (HF) is a hazardous acid (HF).

Its danger is due to:

Its corrosivity linked to its acid character (release of the H^+ ion),

Its toxicity due to the release of the fluoride ion F^- , which chelates the calcium and the magnesium of cells.

By definition, the fluorides in acidic medium represent the same type of danger.

The Hexafluorine® molecule can both act on the proton H^+ and chelate the fluoride ion F^- , while removing them rapidly from the surface of the eye or the surface of the skin. The penetration of the acids and the toxic action of the fluorides are stopped. Thus immediate washing with Hexafluorine® permits to reduce the seriousness of the exposure and to minimize or to avoid complications (heart troubles that may prove fatal) and sequelae (scars, amputations).

Numerous studies show (1,2,3):

Its efficacy on HF and its derivatives, in comparison with washing with water only or water followed by calcium gluconate, whatever the concentration,

> Its innocuousness,

> Its benefit as first aid washing.

Ex vivo(1,2), and in vivo(3) studies have shown greater efficacy (complete absence of burns) when Hexafluorine® is used within the first minute, versus water and/or application of calcium gluconate (usual antidote for burns due to fluorinated acids), even on concentrations of 70 % HF.

With 32 published cases (3, 4, 5), the use of Hexafluorine® in industry results in the following observations:

After every washing, pain stops rapidly which facilitates the secondary care management,

No sequela reported, although 5 cases could have been fatal,

Sick leaves are close to nil, and consist mainly in observation time in hospital.

CONCLUSION

With an active solution such as Hexafluorine® used immediately after a splash, the penetration and the effect of HF on tissues can be avoided or reduced. Thus using Hexafluorine® limits the development of the burn and its associated complications. After late or insufficient washing, a secondary treatment such as calcium gluconate may be applied, in accordance with the protocol of the responsible medical authority.

Technical information on HEXAFLUORINE®

1.DESCRPTION

Hexafluorine®: emergency-washing solution for splashes due to hydrofluoric acid and its derivatives.

2 CLAIMS

First aid device for the washing of hydrofluoric acid

(HF) splashes operating on the double danger of acid and of fluorides in acidic medium (for instance, boron trifluoride).

> Antalgic effect.

Hexafluorine® stops the action of the acid, prevents the penetration of the aggressive product and chelates the fluoride ion.

Hexafluorine® may be used on acids, in general.

> At the workplace, when Hexafluorine® is used within the first minute after splash, the chemical can be removed before it starts to burn.

> Used as delayed washing, Hexafluorine® can limit the initial injuries and facilitates the secondary treatments such as calcium gluconate, thus bringing the risk of severe sequelae to a minimum.

3.MAIN FEATURES

Etat : liquid

Amphoteric and chelating molecule, absorbing acids and chelating fluorides

> Double effect: washing by mechanical effect and chemical bonding (chelation)

Shelf life: 2 years

4.SAFETY/INNOCUOUSNESS

EC 0459 Marking

Medical device, class IIa

Acute toxicology: non-irritant (to eye and skin), non-toxic ($DL50 > 2000 \text{ mg/kg}$)

> Sensitization: non-allergenic

> Sterile solution (sterilized by autoclave)

5.INSTRUCTIONS FOR USE

Storage: Hexafluorine® freezes at 0°C and recovers its properties when warming. It remains stable up to 150°C .

Use on work premises:

Remove clothes or/and contact lenses

Wash as soon as possible (for about 3 minutes for an eye and 5 minutes for skin)

Visit a specialist for medical attention

Recommended temperature of use: from 15°C and 35°C

Use as delayed washing:

Wash for 3 to 5 times longer than the time of contact

Application of calcium gluconate gel on skin, in accordance with the medical protocol established by the responsible medical authority

First Aid & Skincare - First Aid - Hexafluorine



Protocol for Hexafluorine® use

In cases of hydrofluoric acid splashes or its derivatives in an acidic medium*

ACTION WITHIN THE FIRST MINUTE



To wash one eye



Use
1 LPM
500 ml



To wash a body



Use
1 DAP
5 litres

In all cases, washing must be followed by a medical examination.

Depending on the company's recommended medical protocol,
apply locally a specific antidote such as calcium gluconate.

In the case of delayed washing, the application of an antidote is justified
because of the systemic effect involved in this kind of situation.



Industrial Protective Products (WA)
Supporting Better Products



First Aid & Skincare - First Aid - Hexafluorine

WASHING PROTOCOL WITH HEXAFLUORINE®*

Start washing within the first minute following the splash,
beginning with uncovered areas.

Remove clothing and/or contact lenses.

Continue washing the unclothed areas as quickly as possible.
Never put back on clothes stained with washing residue or chemicals.

Consult a specialist.

GENERAL INSTRUCTIONS

Never delay washing.

For optimal effectiveness use Hexafluorine® **as the primary action**. If there is no available Hexafluorine®, use water and then wash with Hexafluorine® as soon as possible.

Use the entire contents of the container.

For a contact time **greater than 1 minute**, prolong the washing with Hexafluorine® and if needed, continue the washing for **3 to 5 times the duration of the contact time**. In case of an ocular splash, it is not necessary to continue washing for more than 15 minutes.

Depending on the company's recommended medical protocol, apply locally a specific antidote such as **calcium gluconate**.

Then immediately seek medical advice.

After an active washing of the eye, the use of **AfterwashII®** is recommended to facilitate a quicker return to a physiological state.

If **oral mucosa** is affected by the splash, rinse the mouth with Hexafluorine® and then spit it out.

If the **ear canal** is affected, wash as rapidly as possible with Hexafluorine® by instilling 500ml inside the canal, leaning the head to one side, in order to allow the liquid to flow out of the ear.

As in any case of unilateral rinsing of one ear with a liquid at room temperature, a dizzy feeling, with no serious consequences, can occur. It will spontaneously stop after a few minutes.

First Aid & Skincare - First Aid - Hexaflourine



Hexaflourine® LPD

SC DP 18/H058

- PVC portable eyewash fitted with a patented ergonomic eyecup
 - An eyebath without applying any pressure
 - Easy to use, eye opening made easier
 - Specially adapted for vehicles & mobile teams
- Application: The Eye Intervention: < 1 min.
Capacity: 500mL
Maintenance: Disposable
Shelf-Life: 2 years or 6 months after breaking seal



Hexaflourine® LPMD

SC DP 18/H082

- PVC bottle portable eyewash fitted with an ergonomic eyecup
 - An eyewash giving a soft eyeflush
 - Easy to use
 - Specially adapted for mobile teams, vehicles and laboratories
- Application: The Eye Intervention: < 1 min.
Capacity: 200mL
Maintenance: Disposable
Shelf-Life: 2 years



HEXAFLUORINE® solution Wall-mounted Station - LMPE. FA

SC DP 18/H103

- Visible fixed eye & skin wash station with clear door
 - An eyewash giving a soft eyeflush
 - Easy to use
 - Specially adapted for laboratories
- Application: Eyes Intervention: < 1 min.
Capacity: 2 x 500mL bottle, 1 x 250mL Afterwash
Maintenance: Disposable
Shelf-Life: 2 years



Hexaflourine® Autonomous Port- able Shower

SC DP 18/H059 - 5 Litre Hexaflourine

- A portable, self contained handspray
 - Micronised spray for perfect dispersion
 - Can be fixed or kept in vehicle
 - Easy to bring and to apply to injured persons
 - Transportable to mobile teams
 - Comes with storage box
- Application: The whole body Intervention: < 1 min.
Capacity: 5 Litres
Maintenance: Refillable
Shelf-Life: 2 years
Environmentally Friendly

Order Information



Call 08 9330 6355



Industrial Protective Products (WA)
Supporting Better Products



First Aid & Skincare

First Aid - Defibrillators

Sudden Cardiac Arrest (SCA)

The only effective treatment is to deliver an electrical shock using a device called a defibrillator (to de-fibrillate the heart), which stops the chaotic rhythm of a heart in VF, giving it the chance to restart beating with a normal rhythm.

SUDDEN CARDIAC ARREST & EARLY DEFIBRILLATION

SUDDEN CARDIAC DEATH IS SURVIVABLE!

Sudden cardiac arrest (SCA) is a condition in which suddenly and unexpectedly the heart stops beating due to a malfunction in the heart's electrical system. The malfunction that causes SCA is a life-threatening abnormal rhythm, or arrhythmia. The most common arrhythmia is ventricular fibrillation (VF). When in VF, the heart's rhythm is so chaotic (called "fibrillating") that the heart merely quivers, and is unable to pump blood to the body and brain. Once a heart has entered VF, sudden cardiac arrest occurs. A victim in SCA first loses his or her pulse, then consciousness, and finally the ability to breathe. But all of this happens quickly - in a matter of seconds. Without immediate treatment from a defibrillator, 90-95 percent of SCA victims will die. The only effective treatment for SCA is to deliver an electrical shock using a device called a defibrillator (to de-fibrillate the heart), which stops the chaotic rhythm of a heart in VF, giving it the chance to restart beating with a normal rhythm.

AUTOMATED EXTERNAL DEFIBRILLATOR (AED):

An AED is a small, portable device that analyzes the heart's rhythm and prompts the user to deliver a defibrillation shock if it determines one is needed. Once turned on, the AED guides the user through each step of the defibrillation process by providing voice and/or visual prompts. AEDs are specially designed for easy use by any "first responder" who arrives on the scene of a medical emergency. A "first responder" can be an emergency medical services worker, a firefighter or police officer, or it can be a layperson with minimal AED training.

HOW DOES AN AED WORK?

Once an AED is turned on, it provides prompts to guide the user through the process. One of the first prompts instructs the user to connect the AED to the victim via the adhesive electrodes (pads) placed on the chest. The AED then analyzes the victim's heart rhythm through the electrodes using a built-in software program. It then determines if a shock is necessary. More specifically:

The electrodes (pads) placed on the victim's body send the heart rhythm information (ECGs) to the AED.

The AED "reads" short segments of the heart's rhythm. It checks characteristics such as frequency, shape, slope, amplitude and heart rate.

Based on these characteristics, the AED determines whether or not a shock is needed and activates the appropriate user prompts.

If a shock is needed, the AED will prompt the user to press the button that delivers the shock (some AEDs automatically deliver the shock). The responder will then be prompted to administer CPR for approximately 2 minutes. The AED will then re-analyze the heart rhythm to determine if more shocks or additional CPR is needed.

BE AWARE

Cardiopulmonary resuscitation (CPR) will not restart a heart in sudden cardiac arrest. CPR is just a temporary measure used to continue a minimal supply of oxygen to the brain and other organs. When someone is in sudden cardiac arrest, defibrillation is the only way to re-establish a regular heartbeat.

SCA OR HEART ATTACK?

Sudden cardiac arrest occurs when the heart fibrillates - a chaotic, abnormal electrical activity of the heart -- which causes the heart to quiver in an uncontrollable fashion. The person loses consciousness very quickly and unless the condition is reversed, death follows in a matter of minutes. Heart attack, on the other hand, occurs when the blood supply to part of the heart muscle itself is severely reduced or stopped because of an obstruction in an artery. A heart attack can trigger sudden cardiac arrest, but they are not the same.

First Aid & Skincare

First Aid - Defibrillators



AED: Lifepak CR Plus Fully Automatic Defibrillator

SC DB 80403-000239 - Lifepak CR Plus Defibrillator

Confidence is a simple, two-step process

Step 1: Turn it on

Step 2: Apply the electrode pads

Simple to use. Simple to manage. Simple to transfer care to professionals. And effective in saving the life of a victim of sudden cardiac arrest.

Featuring the same advanced technology trusted by emergency medical professionals—yet simple to use—the LIFEPAK CR Plus automated external defibrillator (AED) is designed specifically for the first person to respond to a victim of sudden cardiac arrest (SCA). Unlike AEDs with complex prompts and limited energy for defibrillation, the fully automatic LIFEPAK CR Plus AED combines an easy two-step operation, just the right level of guidance, and the capability to escalate to 360 joules when needed.



LIFEPAK CR Plus AED Training System

SC DB 11250-000073 (English only)

LIFEPAK CR Plus AED Training System

SC DB 26500-001156 - Operating Instructions for the Training System

SC DB 11250-000099 - Replacement Remote Control and Cable

Order Information



Call 08 9330 6355



Industrial Protective Products (WA)
Supporting Better Products



First Aid & Skincare

First Aid - Defibrillators



AED: Lifepak Express Defibrillator

SC DB 80403-000239 - Lifepak CR Plus Defibrillator

The LIFEPAK EXPRESS defibrillator is designed for safe and simple use by the first person at the scene of a sudden cardiac arrest. An internal computer analyzes the heart rhythm and guides the user step-by-step with clear, calm voice prompts. A centrally located flashing shock button will alert the rescuer if the defibrillator determines a shock is needed.

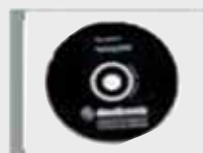
QUIK-PAK™ electrodes are easy to use and connect with all Medtronic defibrillators, which allows for smooth transition of the patient from the scene of a cardiac arrest to the ambulance and into the hospital. Infant/Child Reduced Energy Defibrillation Electrodes make therapy available to even the youngest victims of sudden cardiac arrest.

The rugged design and ease of use make the EXPRESS an excellent choice where the first responders will be minimally trained; the advanced technology and features make it the device of choice for many professional responders.

The defibrillator uses the latest ADAPTIV™ biphasic technology, which automatically adjusts the shock waveform based on the person's need. The device can provide additional shocks of up to 360 joules if the heart doesn't respond to the first shock.

The device stores ECG data for wireless transmission through an infrared IrDA port to a personal computer (PC) which eliminates the need for data cards. User-friendly, PC-based software allows easy download, annotation and review of both ECG and event data

AHA/ERC Guidelines 2005 consistent
Clear, calm voice guides user one step at a time
Flashing shock button
Highly visible readiness indicator
Infant/Child Electrode Capability
Lightweight, compact, rugged and durable
Simplified maintenance
Compatible with EMS and hospital technology



First Aid & Skincare

First Aid - Defibrillators



Complete Soft Shell Carrying Case

SC DB 21300-004576

Complete Soft Shell Carrying Case



Hard-shell, Water-tight Carrying Case

SC DB 11260-000015 -

Hard-shell, Water-tight Carrying Case



Wall Mount Bracket

SC DB 11210-000021 -

Wall Mount Bracket for LIFEPAK CR Plus or LIFEPAK EXPRESS AEDs



AED Wall Cabinet with Alarm

SC DB 11220-000079 (White)

AED Wall Cabinet with Alarm Surface mount, rolled edges. Works with LIFEPAK 500, LIFEPAK 1000, LIFEPAK CR Plus, or LIFEPAK EXPRESS defibrillators. Steel finish wall cabinet with white trim. Surface mounted trim style with 7" return



AED Wall Cabinet with Alarm

SC DB 11220-000076 - Stainless

Surface mount, rolled edges. Works with LIFEPAK 500, LIFEPAK 1000, LIFEPAK CR Plus, or LIFEPAK EXPRESS defibrillators. Steel, with stainless steel trim. Surface mounted trim style with 7" return.



AED Floor Stand Cabinet with Alarm

SC DB 11210-000028-

Works with LIFEPAK 500, LIFEPAK 1000, LIFEPAK CR Plus, or LIFEPAK EXPRESS defibrillators. White epoxy painted steel 52" tall, 14" x 17-3/8" high x 7" deep



Replacement Kit for CHARGE-PAK™ Battery Charger

SC DB 11403-000001 -

Includes 2 sets electrodes and 1 battery charger, replacement instructions, and discharger for safe disposal of used CHARGE-PAK charger



Infant/Child Reduced Energy Defibrillation Electrode Starter Kit

SC DB 11403-000001 -

For use only with LIFEPAK® 500 Biphasic AED with pink connector or LIFEPAK 1000 defibrillator, LIFEPAK EXPRESS AED or LIFEPAK CR Plus AED. For use on children less than 8 years of age or less than 55 lbs.

Order Information



Call 08 9330 6355



Industrial Protective Products (WA)
Supporting Better Products



First Aid & Skincare - Safety Showers & Eyewashes

All Pratt Emergency Safety Showers & Eyewash units fully comply with AS4775 & ANSI Z358.1 for emergency eyewash and shower equipment. Stainless Steel construction ensures a long service life, even in harsh working environments, and we have a range of customisable options to suit any application. From portable eyewashes through to full body multi-spray decontamination units, retro-fit Anti-Scald kits and HD mobile trailer systems, we have a solution to any situation.

Combination Units

Pratt has your whole body covered with its Combination units – a safety shower and eye/face wash in one. These stainless steel units feature a conical showerhead ensuring whole body coverage and advanced Aerostream or Softstream nozzles, designed to gently cover the entire face and/or eyes.

Combination Unit Selection Chart

Model Number	Eye Wash	Face Wash	Bowl	Foot Operated	Aerated Nozzles
SES607	✓	✓	✓	✓	✓
SE603	✓	✓	✓	✗	✓
SE612	✓	✗	✓	✓	✓
SE616	✓	✗	✓	✗	✓
SE675	✓	✗	✗	✗	✓
SE679	✓	✗	✗	✓	✓
SE685	✓	✓	✗	✗	✓
PEM607	✓	✓	✓	✓	✗
PEM603	✓	✓	✓	✗	✗
PEM675	✓	✓	✗	✗	✗

*Please note that all units are hand operated.

First Aid & Skincare - Safety Showers & Eyewashes



Eye and Face Wash Units

Pratt's eye and face wash units are the ultimate in water first aid. Using innovative nozzle designs, these units deliver a soft curtain of water to rapidly douse the eyes area or the entire face. Constructed of quality stainless steel these units can be installed in hazardous areas with confidence.

Eye & Face Wash Selection Chart

Model Number	Eye Wash	Face Wash	Bowl	Foot Operated	Aerated Nozzles	Wall Mounted
SE546	✓	x	✓	✓	✓	x
SE545	✓	x	✓	x	✓	x
SE575	✓	x	x	x	✓	✓
SE515	✓	x	✓	✓	✓	✓
SE505	✓	x	✓	x	✓	✓
SE475	✓	✓	x	x	✓	✓
SE480	✓	✓	✓	✓	✓	x
SE420	✓	✓	✓	x	✓	x
SE400	✓	✓	✓	x	✓	✓
SE415	✓	✓	✓	✓	✓	✓
PEM575	✓	✓	x	x	x	✓
PEM490	✓	✓	✓	x	x	✓
PEM492	✓	✓	✓	✓	x	x
PEM491	✓	✓	✓	x	x	x

*Please note that all units are hand operated.



Industrial Protective Products (WA)
Supporting Better Products



First Aid & Skincare - First Aid - Safety Showers



Pratt SE607 Safety Shower/ Eyewash

SS PRA SE607

Free Standing Combination Safety Shower & Eye/Face Wash, Hand & Foot Operated, c/w Bowl.



Pratt SE612 Safety Shower/ Eyewash

SS PRA SE612

Free Standing Combination Safety Shower & Eye Wash, Hand & Foot Operated, c/w Bowl.



Pratt PS660 Safety Shower/ Eyewash

SS PRA PS660

Free Standing Reticulated Combination Safety Shower & Eye/Face Wash, Hand Operated, c/w Bowl, which can be used in a continuous flow ring-main water system to greatly reduce the risk of high water temperature.



Pratt SE546 Safety Shower/ Eyewash

SS PRA SE546

Free Standing Safety Eyewash, Hand & Foot Operated, c/w Bowl.



Pratt SE50P Portable Eyewash

SS PRA SE50P

9ltr Portable Eye & Body Wash which uses compressed air to provide a soft aerated water stream and can be easily refilled with potable water.



Pratt SEAS Anti Scald Kit

SS PRA SEAS

Anti-Scald Kit, suitable for any Safety Shower & Eyewash, which automatically opens and closes once preset water temperatures are reached to allow the hot water to be flushed from the system. Assists in meeting water temperature requirements under AS4775 and ANSI Z358.1.



Pratt SETESTKIT Test Kit

SS PRA SETESTKIT

Safety Shower & Eyewash Test Kit to allow for weekly and annual inspection & testing as required under AS4775 and ANSI Z358.1. This kit includes all the necessary components and a mobile bin for collection/disposal of water after testing which can be used to store the testing components when finished.



Pratt SE4050 Portable Eyewash

SS PRA SE4050

60ltr Self-Contained Portable Eyewash which complies with the AS4775 & ANSI Z358.1 Standards criteria for primary eyewash.



Pratt SE4764 Water Additive

SS PRA SE4764

Eyewash Station Water Preservative which is added to the SE4050 Portable Eyewash to protect against bacteria, fungus, algae and other micro-organisms for up to 3 months.

First Aid & Skincare - First Aid - Safety Showers



FENDALL PUREFLOW 1000

SS HON 32-001000-0000 - Fendall Pure Flow 1000 Eyewash Station (Station Only)

SS HON 32-001050-0000 - Refill Cartridges (Set of 2)

SS HON 32-001051-0000 - Wall Bracket

Self-contained, versatile and portable. 15 mins of constant flushing. No costly plumbing.

- Patented system delivers contaminant-free and physiologically correct saline solution from factory-sealed cartridges.
- Easy to install with no costly plumbing.
- Fluid pressure balancing system provides a constant fluid flow rate and stream height that provides 1.8 lpm for entire 15-minute flushing period.
- Factory-sealed cartridges last up to 24 months (determined by date of manufacture. Always check product expiration date), at least four times longer than other primary self-contained eyewash devices.
- Cartridge replacement takes less than 5 minutes.
- Factory-sealed fluid cartridges eliminate mixing and remain sealed until activated.



FENDALL PORTASTREAM II

SS HON 32-000200-0000 Complete unit. Includes 5.3Litre container of Eyesaline concentrate

SS HON 32-000513-0000 Eyesaline Concentrate. 5.3Litre

SS HON 32-001100-0000 Water Additive. 236ml (8oz)

SS HON 32-000532-0000 Reflective Cover to suit

SS HON 32-000102-0000 Replacement Pull Strap

SS HON 32-000201-0000 Replacement Locking Fill Cap

SS HON 32-000203-0000 Replacement Nozzle Assembly

Great value. 15 mins of constant flushing, without costly plumbing.

- Patented nozzle strap is easily removed to activate flushing, leaving hands free to hold eyelids open.
- Easy to install with no costly plumbing.
- Molded handle accepts hanging bracket.
- 72.8 litre capacity permits thorough flush providing 1.8 lpm for 15min as required by ANSI Z358.1 2009 & AS 4775 2007.
- Large fill hole/lockable cap simplifies refilling & cleaning, reducing tampering.
- Illustrated highly visible instructions.
- Concentrate mixes with potable water creating a preserved, buffered and physiologically correct saline solution. Replace every 6 months.
- Water Additive mixes with potable water to create a preserved solution inhibiting harmful bacteria. Replace every 4 months.

Order Information



Call 08 9330 6355



Industrial Protective Products (WA)
Supporting Better Products



First Aid & Skincare - First Aid - First Aid Kits



Vision Safe National Workplace Class B - First Aid Kit

SC VIS FAWWB Wall Mountable

SC VIS FAWPB Portable Soft case

SC VIS FAWTB Toolbox

- Ideal for Medium to Large workplaces
- Recommended for construction sites at which less than 25 persons work and for other places of work at which less than 100 and more than 10 persons work
- Innovative easy to use 5 module set
- Comprehensive maintenance check list
- Available in Wall Mountable, Portable Soft Case or Toolbox versions



Trafalga Handy 3, 1-10 EMPLOYEE & VEHICLE FIRST AID KIT

SC BR 848794

HANDY KIT 3 RED BAG

SC BR 848890

HANDY KIT 3 BLUE BAG

SC BR 856603

HANDY KIT 3 GREEN BAG

Exceeding NSW 'C' Schedule compliance the popular Handy 3 first aid kit is great value for money. It has a simple design and practical internal layout, supplied in an embroidered, hardwearing, zippered, 600D/PVC case. This compact kit is ideal for the glove box, cupboard or suitcase.

Product Dimensions: 200 x 130 x 65mm (W x H x D)



Vision Safe General Purpose First Aid Kit

SC VIS FAWGP

- Tough nylon fabric pouch
- Light weight
- Useful belt loop for outdoor workers
- Comprehensive maintenance checklist
- Soft pack for easy storage



Vision Safe Snake Bite Kit

SC VIS FAWSB

- Tough nylon fabric pouch
- Compact kit
- Everything you need for the prompt treatment of snake bite and shock
- Clear and easy to understand instruction guide
- Practical belt loop for outdoor workers
- Comprehensive maintenance checklist



Trafalga TRAVEL KIT 3

SC BR 856930 TRAVEL KIT 3

The Travel First Aid Kit is the big traveller with a broad compliment of first aid components.

Elegant larger soft pack design and pocketed internal storage it's the deluxe first aid to go.

Product Dimensions: 240 x 140 x 75mm (WxHxD)



Trafalga HANDY 6 - VEHICLE & LOW RISK FIRST AID KIT

SC BR 856623

HANDY KIT 6 HARD CASE

This is a well appointed first aid kit for its size - all you need and more. The Handy 6 is the top of the range in the handy kits. Supplied with a large selection of first aid inclusions all contained in a quality ABS plastic case.

Product Dimensions: 260 x 170 x 65mm (WxHxD)



Trafalga HANDY 4 - VEHICLE & LOW RISK FIRST AID KIT

SC BR 856656

HANDY KIT 4 HARD CASE

The Handy 4 Exceeds NSW 'C' Schedule and contains a comprehensive range of first aid products supported by an ABS hard case. Its compact design allows the kit to be easily stored.

Product Dimensions: 187 x 122 x 50mm (WxHxD)

First Aid & Skincare - Skincare - Hand Cleaners



Hand Cleaners and Skincare

Occupational Contact Dermatitis (OCD) is accountable for 75 per cent of skin conditions in the workplace and occurs in workers who are exposed to irritating or allergenic substances or specific physical factors. The Stoko® range's core competency is "keeping working hands healthy", producing skin compatible products that help prevent occupational dermatitis. All Stoko® products are safe for the environment, 100% biodegradable, use recycled packaging and most products use zero solvents. The Stoko® Skin Care 3-Point program is a comprehensive solution to address the challenge of Skin Disease at the workplace. The three parts of the program 1) Before work care 2) Cleansing and 3) Conditioning helps workers achieve the proper balance between cleaning and skin compatibility.



Septone Citra Scrub

SC SEP IHCS500 - 500mL

SC SEP IHCS4 - 4L

SC SEP IHCS20 - 20kg

Citrus Based Hand Cleaner

- Contains enviro scrubbers
- Waterless
- Speedily removes ingrained soils, grease, oil, dirt and mud
- Contains lanolin and moisturisers to help prevent dry skin



Septone Protecta Grit

SC SEP IHPG500 - 500g

SC SEP IHPG4 - 4L

SC SEP IHPG20 - 20kg

Heavy Duty Solvent Based Hand Cleaner

- Contains pumice
- Waterless
- Speedily removes ingrained soils, tar, carbon, varnish, paint
- Contains lanolin and moisturisers to help prevent dry skin



Septone Protecta Gold

SC SEP IHG05 - 5L Pump Pack

SC SEP IHG020 - 20L

Solvent Free Hand Cleaner

- 100% Solvent Free
- Fresh lemon fragrance
- Contains Enviro Scrubbers
- Contains moisturizers to help prevent dry skin
- Removes grease, oil, coal dust and most industrial soils



Septone Orange Scrub

SC SEP IHOS500 - 500mL

SC SEP IHOS5 - 5L Pump Pack

SC SEP IHOS20 - 20L Pump Pack

Citrus Based Hand Cleaner

- Contains pumice
- Waterless
- Pleasant orange fragrance
- Speedily removes grease, oil, dirt, mud and most industrial soils
- Contains lanolin to help prevent dry skin



Septone Eliminator

SC SEP IHPE500 - 500mL

SC SEP IHPE4 - 4L Pump Pack

Paint & Resin Removing Hand Cleaner

- Specialty formula
- Contains pumice
- Pleasantly fragrance
- Removes 2-pack, acrylic & enamel paints, polyester & epoxy resins furniture coatings, urethanes and sealants
- Contains lanolin to help prevent dry skin



Septone Protecta Guard

SC SEP ISPG500 - 500mL Pump Pack

Solvent Resistant Barrier Cream

- Protects skin against dry powders, dust, grease, oil and solvents
- Non-greasy, non-oily
- Contains added moisturiser



Industrial Protective Products (WA)
Supporting Better Products



First Aid & Skincare - Skincare - Hand Cleaners



Septone Protecta Care

SC SEP ISPC500 - 500mL Pump Pack

After Work Skin Repair Cream

- Helps skin repair itself
- Helps prevent against Industrial Dermatitis
- Helps soften rough scaly and thickened skin



Septone Protecta Plus

SC SEP ISPP500 - 500mL Pump Pack

Water Repellent Barrier Cream

- Protects skin from water, moisture, water borne irritants, acids, alkalis and electrolyte solutions
- Non-greasy, non-oily
- Contains added moisturiser



Stoko Kresto Starter Pack

SC SOL 29984502

Extra heavy-duty cleanser for tough soils such as grease, oil, ink and carbon black. Contains all-natural, biodegradable walnut shell scrubbers to remove even ground-in dirt. Low solvent content, good skin compatibility

Includes: 2 x 2000ml softbottles, 1 x SVP dispenser



Stoko Kresto

SC SOL 98704506

For extra heavy cleaning of grease, oil, ink and carbon black. Contains all natural, biodegradable walnut shell scrubbers. Low solvent content, good skin compatibility

SIZE: 250ml, 2000ml, 1892ml, 4000ml



Stoko Solopol

SC SOL 32140

For medium to heavy-duty cleaning of common industrial dirt. 100% solvent-free. Excellent skin compatibility. Contains all-natural walnut shell scrubbers.

SIZE: 250ml, 2000ml, 1892ml, 4000ml



Stoko Solopol Starter Pack

SC SOL 29988702

For medium to heavy-duty cleaning of common industrial dirt. 100% solvent-free. Excellent skin compatibility. Contains all-natural walnut shell scrubbers.

Includes: 2 x 2000ml softbottles, 1 x SVP dispenser



STOKO® GEL - 118ML TUBE 237ML PUMP BOTTLE & 2000ML SOFTBOTTLE

SC SOL 10088806 - Ethanol based gel that sanitizes hands without water.

Kills 99.99% of common germs that can cause disease
Contains a conditioner to help prevent skin from drying out
Mild to the skin scrubbers.

Includes: 118ml, 237ml, 2000ml



STOKO® BLUEFORCE® - 1000ML & 2000ML SOFT- BOTTLE

SC SOL 33540 - 100% solvent-free, scrubber-free hand cleaner for medium to heavy-duty dirt and soils

Green Seal Certified™
Hydrocarbon based solvent, grit-free medium to heavy-duty hand cleaner
Excellent skin compatibility
Smooth liquid with advanced cleaning power for common industrial dirt and grime
Neutral, fresh fragrance

Includes: 1000ml, 2000ml



STOKO® TRAVABON® - 100ML TUBE & 1000ML SOFTBOTTLE

SC SOL 33884

SC SOL 29988707

Before work cream that supports the natural function of the skin when working with oil-based substances and organic solvents. Also facilitates cleaning of the skin when exposed to stubborn dirt

Includes: 100ml, 1000ml

First Aid & Skincare - Skincare - Hand Cleaners



STOKO® STOKODERM® - 100ML TUBES & 1000ML SOFT BOTTLE

SC SOL 33868 - Cream for use when skin is exposed to both water and oil-based substances during work

Ideal for machine shops
For use when working with water-insoluble substances such as carbon black, casting dust, waste oil and UV lacquers
Silicone-free

Includes: 100ml, 1000ml



STOKO® STOKOLAN® - 100ML TUBE & 1000ML SOFTBOTTLE

SC SOL 33886 - Highly concentrated skin care cream soothes dry, cracked, irritated skin and helps keep skin smooth and healthy.

Concentrated Moisturizer (High Lipid Content), Non-greasy Formula for better grip on tools, Silicone-free, does not leave 'fish eyes' on electronic parts and painted surfaces.
Excellent Skin Compatibility Gender Neutral Fragrance

Includes: 100ml, 1000ml



STOKO® REFRESH® MOIS- TURIZING FOAM

SC SOL 29932 - Foam soap gives a rich and creamy lather, which provides a luxurious hand washing experience

Green Seal Certified™
Thick, luxurious foam encourages frequent handwashing
Hygeni-Lok system means hygienically sealed refills provide a fresh new pump with every changeout
Light, fresh fragrance



STOKO® DISPENSERS - RE- FRESH WHITE

SC SOL 55008810 - Sturdy Plastic dispensers for use with STOKO® Products

Easy to use and Refill
Hygienic and Economical
Compatible with refills and softbottles



STOKO® DISPENSERS - 4000ML

SC SOL 31504 - Sturdy Plastic dispensers for use with STOKO® Products

Easy to use and Refill
Hygienic and Economical
Compatible with refills and softbottles

Order Information



Call 08 9330 6355



Industrial Protective Products (WA)
Supporting Better Products



First Aid & Skincare - Skincare - Sunscreen



MARINE BLUE SPF 50+ LOTION TUBE 4HS W/R

SC MB 0405 - SPF 50+ LOTION TUBE 4HS W/R 100G

SC MB 9327956000412 - SPF 50+ LOTION TUBE 4HS W/R 200G

SC MB 9327956000429 - SPF 50+ LOTION TUBE 4HS W/R 500M/L

SC MB 9327956000436 - SPF 50+ LOTION TUBE 4HS W/R 1000M/L (1L)

This advanced SPF 50+ formulation is fragrance free and easy to apply. It is fast absorbing leaving the skin soft and smooth. This low irritant formulation is ultra-sweat resistant, non-whitening and non-greasy. Contains Vitamin E & Aloe Vera. Ideal for everyday use. Very High Protection Broad Spectrum UVA & UVB. No slip dry lotion, every day use. Non-Whitening & Non-Greasy. Contains Vitamin E and Aloe Vera.



Septone Protecta Sunblock

SC SEP ISSB125 - 125mL

SC SEP ISSB500 - 500mL

SC SEP ISSB1 - 1L

SPF30+ Sunscreen

- 4 Hours water resistant
- Non-greasy, non-oily
- Broad spectrum protection
- Easy rub in formula



Septone Protecta Bodyguard

SC SEP ISBG125 - 125mL

SC SEP ISBG500 - 500mL

SC SEP ISBG1 - 1L

SPF30+ Sunblock With Insect Repellent

- Contains moisturizers and insect repellent
- 2 Hours water resistant
- Non-greasy, non-oily
- Low irritancy



SOLASTICK 30+ LIPBALM

SC HAM 1019013 = 4.5gram stick

SC HAM 1012040 = 12gram stick

Serious protection for your lips

- Solastick is ideal for protecting the lips from drying, cracking, chapping and sunburn.
- It is also useful when applied to difficult to protect areas such as the tops of ears.
- Solastick is Broad Spectrum absorbing UVA and UVB radiation and provides 4 hours water resistance.

First Aid & Skincare - Skincare - Barrier Creams



Derma Guard

- SC VIS DG150** - 150ml Aerosol Mousse
- SC VIS DG500** - 500ml Aerosol Mousse
- SC VIS DG100CONC** - 100ml Cream
- SC VIS DG500PMP** - 500ml Pump Cream

Clinically Tested Skin Protection

Derma Guard™ is the ultimate skin protectant that moisturises, nurtures and protects. Derma Guard™ is clinically tested to work, so you know you're in good hands.

- Light and easy to use
- Completely safe on any area of your skin
- Safe to use in food preparation areas
- Nutrients in the mousse are formulated to keep your skin in top condition
- Non greasy
- Lasts 4 hours with repeated washing
- Repels strong odours
- Protects against resins, mastic and adhesives
- Offers emergency protection from most acids.



PEDOZ POWDER

- SC HAM PEDOZ50**
50 gram puffer pack

- SC HAM PEDOZ**
375 gram puffer pack

Quick relief from foot infections

- Pedoz is used as an antifungal, antibacterial, deodorising and lubricating powder.
- It is particularly useful in combating foot infections such as tinea (athlete's foot), foot odour and in overcoming odour problems with rubber boots or PVC gloves.

Order Information



Call 08 9330 6355



Industrial Protective Products (WA)
Supporting Better Products



A: 39 Norma Road, Myaree
Western Australia 6154

PO Box: 4175,
Myaree Business Centre,
Western Australia 6960

E: sales@ippwa.com.au

W: www.ippwa.com.au

T: +61 8 9330 6355

F: +61 8 9317 1293



Industrial Protective Products (WA)
Supporting Better Products